



Thomayer University Hospital

Vídeňská 800, Prague 4, 140 59



Thomayer University Hospital

provides high quality Medical Care in its region to hundreds of thousands of patients. Besides that, professional teams in different Hospital departments are performing clinical studies for many years. In these clinical departments studies in late stages (phase III.) are mainly provided to assess effectivity (& safety) before registration of medicinal product. Every year, Multicentric Ethics Committee of this hospital approves around 40-50 clinical studies and projects. Big pharmaceutical companies and CROs are regularly bringing their studies in clinical departments and quite often they use service of the specially designed department, **Clinical-Pharmacology Unit (CPU)**.

Hospital departments, for ex.: Internal Department I. and II. with Diabetology and other specific outpatient clinics, Departments of Oncology, Rheumatology, Pneumology, Geriatrics, Infections diseases, Emergency Medicine Department-ICU, Pediatric Department, etc. Extensive list of methods are offered by the Hospital Labs (Hematology, Biochemistry, Immunology, Microbiology, Clinical Pharmacology). Strong IT department of the Hospital is the great support for the Teams in terms of information flow, security and applications.

Map of Thomayer University Hospital

Building E - Hospital Entry

Building B5 - Clinical -Pharmacology Unit

Building B3 - Emergency Medicine Department



Thomayer University Hospital

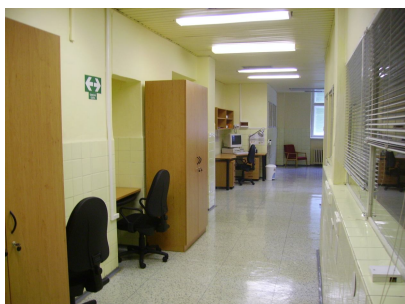
Vídeňská 800, Prague 4, 140 59

Clinical-Pharmacology Unit (CPU)

is one of new departments of the Thomayer University Hospital specializing in providing studies in early phases of the development of Medicinal Products and Medical Devices. The Unit has a capacity of 28 beds with standard equipment to provide pharmacokinetic & bioequivalence studies as well as phase I, I/II studies. In cooperation with other departments of the Thomayer University Hospital we can provide also later stages directly in CPU (phase II/III). Alternatively, this Unit may play the coordinating role in these studies provided in other Hospital department (offering project management, technical support and logistics) as well as it can offer the clinical service (CPU study nurses, Investigators participating actively in visits).

In any case, CPU secures the quality standards are applied and kept.

CPU has been inspected by the Regulatory Authority (State Institute for Drugs Control) in 2009 and found to be compliant with GCP standards. The CPU is also certified to provide drug and device studies phase I-IV under ISO 9001/2008 (2010).



Contacts

Our web site: www.ftn.cz

Jiří Škopek, M.D., Ph.D.
Head of the Clinical-Pharmacology Unit
Phone: +420/776 710 825
jiri.skopek1@ftn.cz

Tel/Fax CPU: +420 261 083 804

Our geographical location within the Czech Republic offers excellent accessibility for our sponsors as well as for volunteers and patient populations.

WHY TO CHOOSE PHASE I UNIT?

- Quality
- Professional project management
- Committed to timelines
- Cost effective
- GCP and GLP compliance
- Flexible and enthusiastic team
- Costs
- Familiarity with western medicine
- Company with international standards

